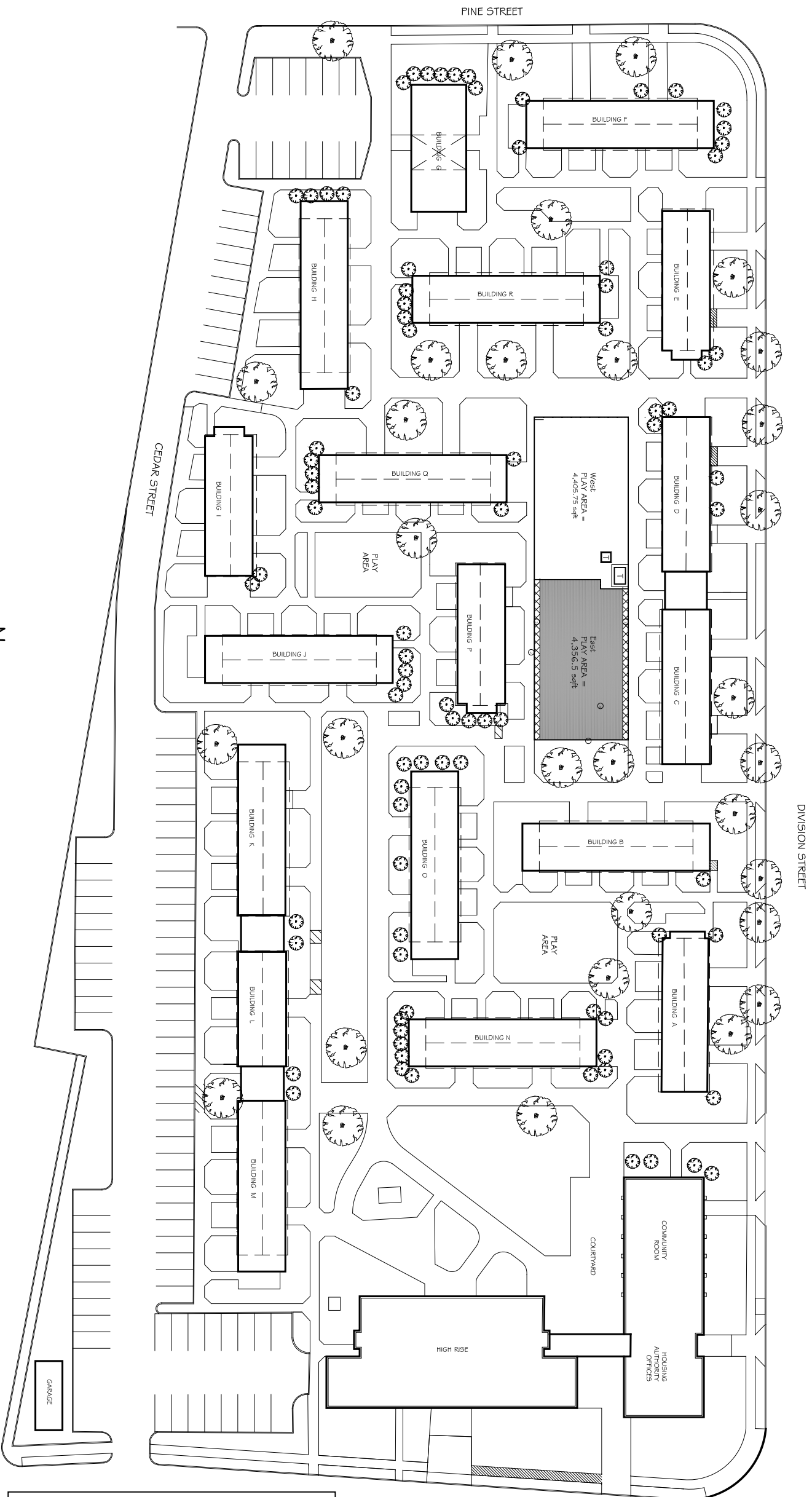


# IFB No. B21004 ASPHALT PAVING SERVICES

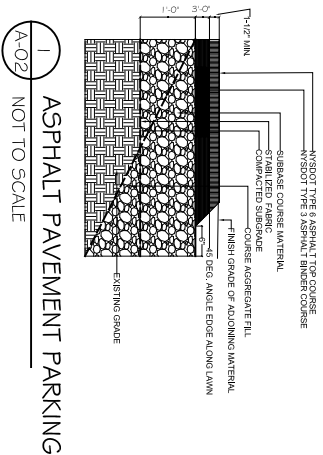
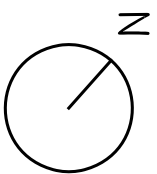
# AMSTERDAM HOUSING AUTHORITY

## 60 DIVISION STREET, AMSTERDAM, NEW YORK

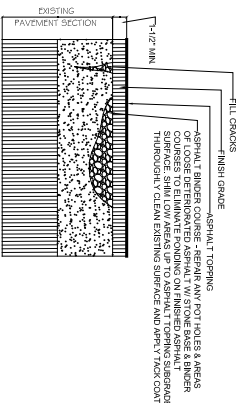


1  
A-00  
AMSTERDAM HOUSING AUTHORITY SITE PLAN

SCALE: 1/64" = 1'



1  
A-02  
ASPHALT PAVEMENT PARKING  
NOT TO SCALE



1  
A-01  
ASPHALT OVERLAY  
NOT TO SCALE

- KEY NOTES for East Play Area**
1. REMOVE CHAINED LINK FENCE AND DISPOSE OF OFF-SITE.
  2. MEET EXISTING LINE & GRADE OF ADJOINING SURFACE.
  3. INSTALL ASPHALT PARKING PAVEMENT PER DETAIL A-02
  4. INSTALL ASPHALT OVERLAY PAVEMENT PER DETAIL A-01
- SAW CUT ASPHALT IN NEAT STRAIGHT LINES. MILL & REMOVE EXISTING ASPHALT PAVEMENT, INCLUDING SUB-BASE MATERIAL, AND DISPOSE OF OFF-SITE.
- PREPARE ASPHALT FOR OVERLAY. INSTALL ASPHALT PAVEMENT ON

SCALE: 1/64" = 1'

DATE: APRIL 13, 2021, Rev. 1 (5/14/2021)

SHEET: **A - 00**

**ASPHALT PAVEMENT IMPROVEMENTS**  
60 DIVISION STREET & 27 WALL ST.  
AMSTERDAM, NY 12010

**AMSTERDAM HOUSING AUTHORITY**  
52 DIVISION STREET, AMSTERDAM, NY 12010  
DAMARIS G. CARBONE, EXECUTIVE DIRECTOR

DRAWN BY:  
ERIKA V. RAMIREZ